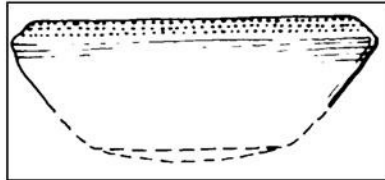


Medieval Green Glazed Ware, 12th - 15th Centuries

Most Green Glazed Ware found in Leicester was made in Chilvers Coton, near Nuneaton, where there were over 60 kiln sites. Locally found pottery was also made at Stamford, Nottingham, Stanion, Lyvedon and elsewhere.



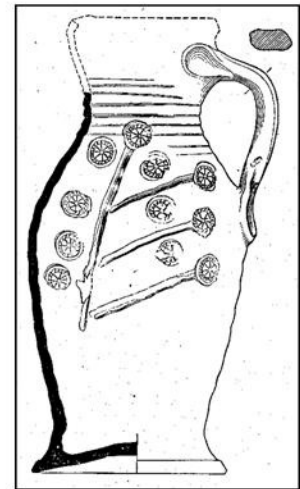
Early unglazed Stamford ware sherd and the bowl it would be from. From 9th Century - c.1050



Glazed Stamford Ware sherd and detail of the fabric.



This jug was discovered when the Jewry Wall, Leicester, was excavated in 1936-9. It was possibly made in Nottingham.



Details of the fabric, glaze and decoration.

Line drawing shows how the rim probably was. (From Kenyon 1948:245 fig.76)

References: -

1. Kenyon K (1948) *Excavations at the Jewry Wall Site, Leicester*, Society of Antiquaries & The Corporation of Leicester
2. Laing L (2003) *Pottery in Britain, 4000BC to AD 1900*, Greenlight Publishing
3. http://www.le.ac.uk/ulas/services/ceramic_analysis.html (accessed 2 November 2010)



All the pottery is in the Leicester City & Leicestershire Museums Collections.
Photographed and compiled by Andy Kirkland