

## Anglo-Saxon Pottery

After the Romans left in about AD410 the economy declined and local pottery manufactures filled the needs. Mass production became impossible, also the quality of the pottery suffered.



On the left is an Iron Age pot from Wanlip (450-350BC), and right an Anglo Saxon pot (4th-6th Century) found near Melton Mowbray. Both are coil built.

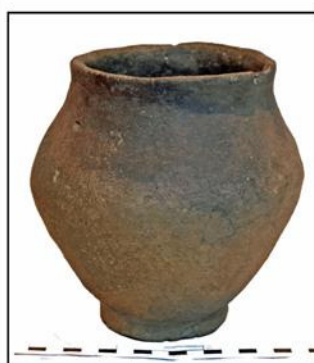
Compare also the fabrics on the Iron Age pottery sheet with the fabric below-they are very, very similar!



Part of an urn found at Rothley and detail of the fabric



An urn excavated in Rothley in 1896 and the label underneath



Two urns from near Melton Mowbray. Notice the decoration and stamping



### References: -

1. Laing L (2003) *Pottery in Britain*, Greenlight Publishing.
2. Beamish M (1998) A Middle Iron Age Site At Wanlip Leicestershire, *TLAHS* Vol 72:1-91