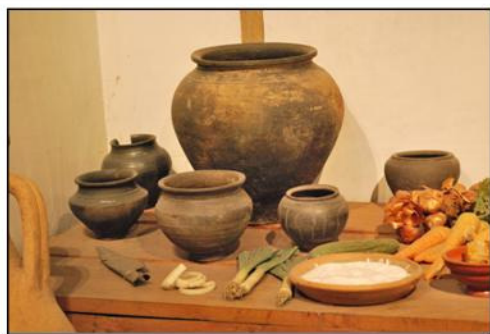


Roman Grey Ware

Roman jars, dishes and bowls for storage and cooking were plentiful during that period, AD43-AD410.

They were made from grey, but also black or orange fabrics.

Most Leicestershire finds were made at either Mancetter-Hartshill in Warwickshire, the Nene Valley in Cambridgeshire, or locally. The kilns worked on a semi-industrial scale.



Roman kitchen displays at the Museum of London

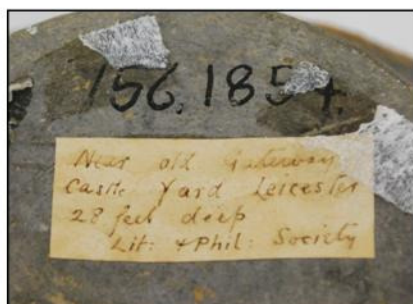


Sherds of Grey Ware from Leicestershire fields.



A Grey Ware Jar in the Jewry Wall Museum.

Label on the base shows the jar was found near Leicester Castle Gateway, in a pit 28 feet deep and donated in 1854. The close up shows the fabric.



References 1. Laing L (2003) *Pottery in Britain 4000 BC to AD 1900* Greenlight Publishing
2. http://www.le.ac.uk/ulas/services/ceramic_analysis.html (Accessed 12th October 2010)



Photographed and compiled by
Andy Kirkland