

## Iron Age Pottery

The Iron Age extended from about 700BC until the Roman Invasion in AD43. The pottery was usually coil built and fired in a bonfire kiln.



A storage jar from Burrough Hill and excavated in 1988



A close up of the shell inclusions in the fabric of this pot. The firing produced the grey inner fabric



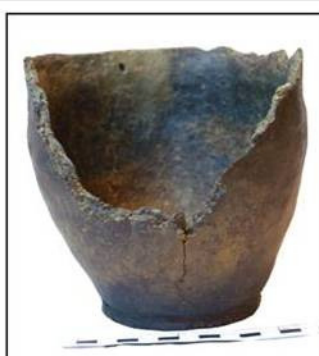
Scored Ware storage jar from Breedon on the Hill. Made after 450BC



This pot was coil built too and the break shows this. Showing the shell inclusions



A sherd from Hallam Fields, Birstall, Excavated in 2001



This pot was excavated in 1992 at an Iron Age settlement near Wanlip, Leicestershire. The close up shows the fabric of the pot