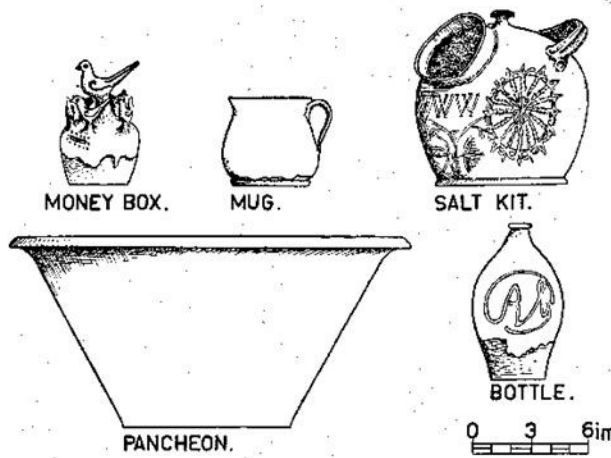
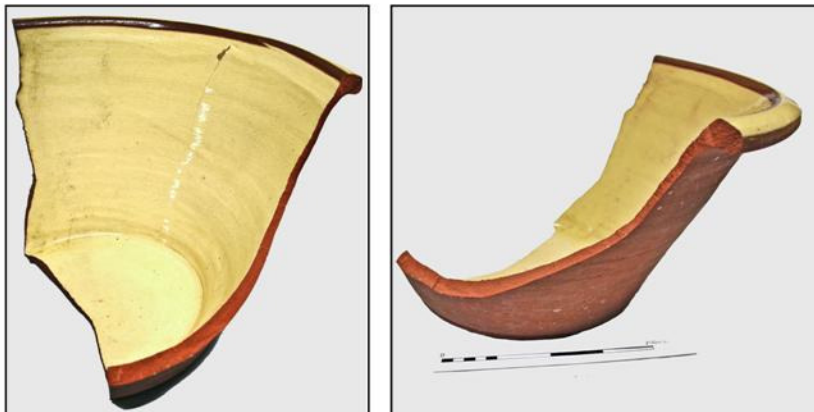
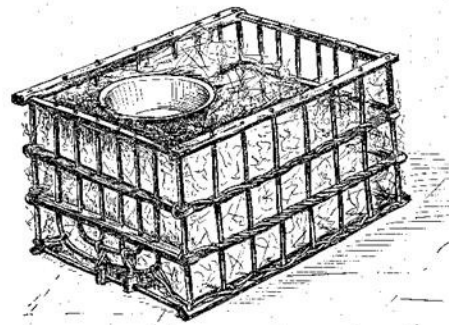
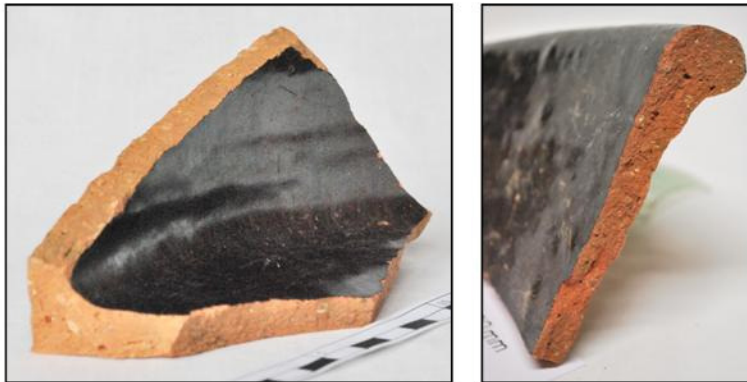


17th to 20th Century North Midlands Earthen Ware

A range of fabrics were produced for general household items. Pancheons (large bowls for milk to cool in) were made for the dairy industry.



Examples of pots from the North Midlands and an illustration of a potter delivering his wares in Halifax. (All drawings after Brears 1971).



Large pancheon found at Market Overton, Rutland.

From the Leicestershire Museums Collection.

- References: - 1. Brears P (1971) *The English Country Pottery: Its History and Techniques*, David & Charles, Newton Abbot. P.62 & 67-8.
2. Spavold J & Brown S (2005) *Ticknall Pots and Potters*, Landmark Publishing, Ashbourne.



Photographed and compiled by Andy Kirkland