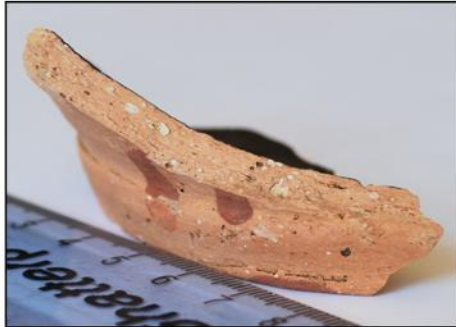


North Midlands Earthen Ware Known as “Pancheon Ware”

This name is usually given to a range of pottery forms, which does include the pancheons that were used in the dairy industry from 17th to 20th Centuries

The Fabric. The colour is sandy to pink and can have many inclusions.

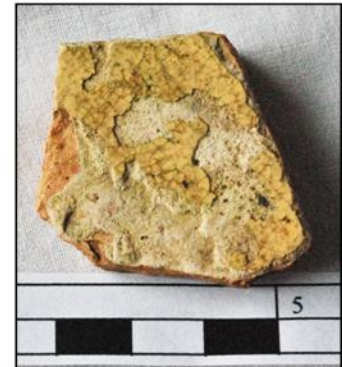
The Glaze. This is on the inside and can be black, dark red or yellow.
Sometimes there is some slip on the outside.



Part of a large vessel



A sherd
with yellow
glaze



References: - 1. Brears P (1971) *The English Country Pottery: Its History and Techniques*, David & Charles, Newton Abbot. P.62 & 67-8.

All the pottery was found in Leicestershire fields and is in a private collection.



Photographed and compiled by
Andy Kirkland